



# Cambridge International AS & A Level

CANDIDATE  
NAME

--

CENTRE  
NUMBER

--	--	--	--	--

CANDIDATE  
NUMBER

--	--	--	--



**BIOLOGY**

**9700/42**

Paper 4 A Level Structured Questions

**October/November 2021**

**2 hours**

You must answer on the question paper.

No additional materials are needed.

## INSTRUCTIONS

- Section A: answer **all** questions.
- Section B: answer **one** question.
- Use a black or dark blue pen. You may use an HB pencil for any diagrams or graphs.
- Write your name, centre number and candidate number in the boxes at the top of the page.
- Write your answer to each question in the space provided.
- Do **not** use an erasable pen or correction fluid.
- Do **not** write on any bar codes.
- You may use a calculator.
- You should show all your working and use appropriate units.

## INFORMATION

- The total mark for this paper is 100.
- The number of marks for each question or part question is shown in brackets [ ].

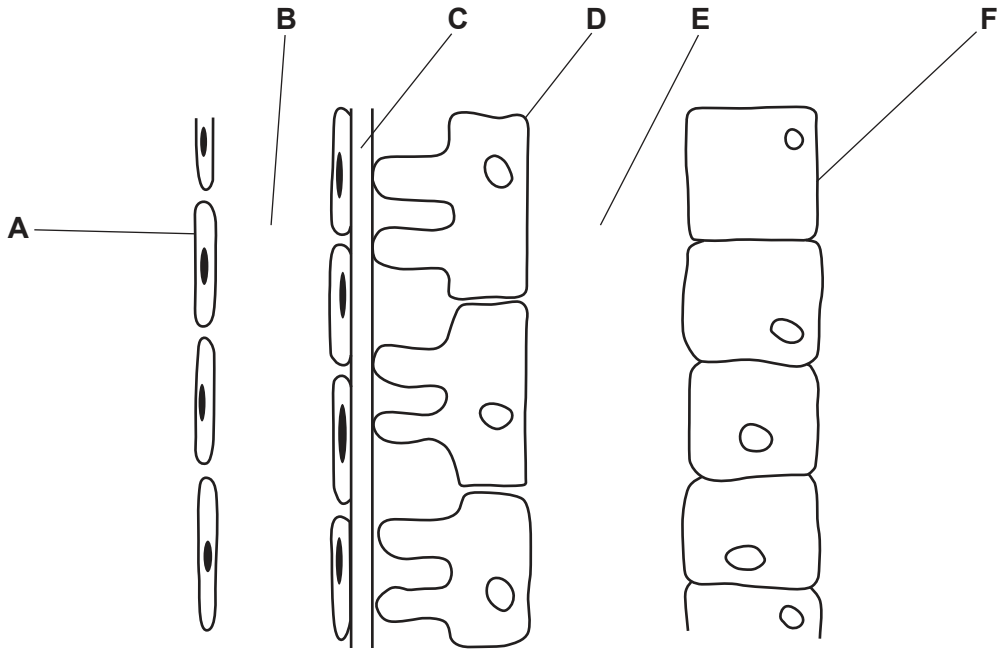
This document has **28** pages. Any blank pages are indicated.

**Section A**

Answer **all** questions.

- 1 (a) The Bowman's capsule of a nephron is involved in ultrafiltration.

Fig. 1.1 is a diagram of part of a Bowman's capsule and glomerulus.



**Fig. 1.1**

With reference to Fig. 1.1, complete Table 1.1 using the letters **A – F**.

Each letter may be used once, more than once or not at all.

**Table 1.1**

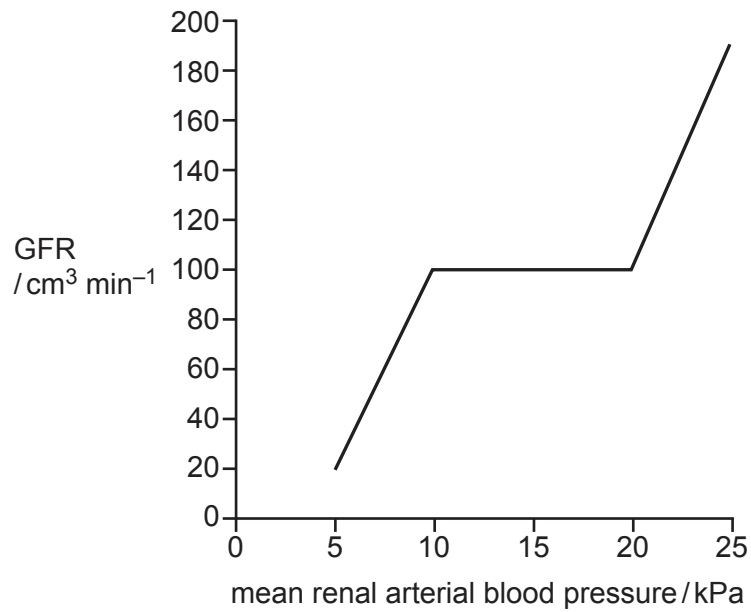
feature	letter
glomerular filtrate	.....
basement membrane	.....
podocyte cell	.....
capillary endothelial cell	.....

[4]



- (c) The glomerular filtration rate (GFR) is the rate at which blood plasma is filtered in the Bowman’s capsule.

Fig. 1.2 shows the relationship between GFR and mean renal arterial blood pressure.



**Fig. 1.2**

- (i) Comment on the relationship between GFR and mean renal arterial blood pressure.

.....

.....

.....

.....

..... [2]

- (ii) Suggest **one** reason why the GFR of a person might decrease.

.....

.....

..... [1]

[Total: 12]

**Question 2 starts on page 6.**

- 2 Scientists are researching new ways to reduce the global atmospheric carbon dioxide (CO<sub>2</sub>) concentration. There are concerns that an increasing atmospheric CO<sub>2</sub> concentration may lead to effects that decrease biodiversity.

(a) Give **one** example of a human activity, other than deforestation, that contributes greatly to the increase in global atmospheric CO<sub>2</sub> concentration.

..... [1]

Algae are aquatic photosynthetic protists. Some researchers genetically modified the unicellular alga, *Chlorella vulgaris*, to try to increase the rate of the light independent stage of photosynthesis.

*C. vulgaris* was modified to increase the expression of the gene coding for aldolase. Aldolase is an enzyme that causes an increase in the concentration of rubisco.

Two cultures of *C. vulgaris*, one that was not genetically modified (unmodified) and one genetically modified, were grown under controlled conditions for 14 days. Samples were taken from the cultures at regular intervals during the 14 days to obtain measurements of dry mass.

The results are shown in Fig. 2.1.

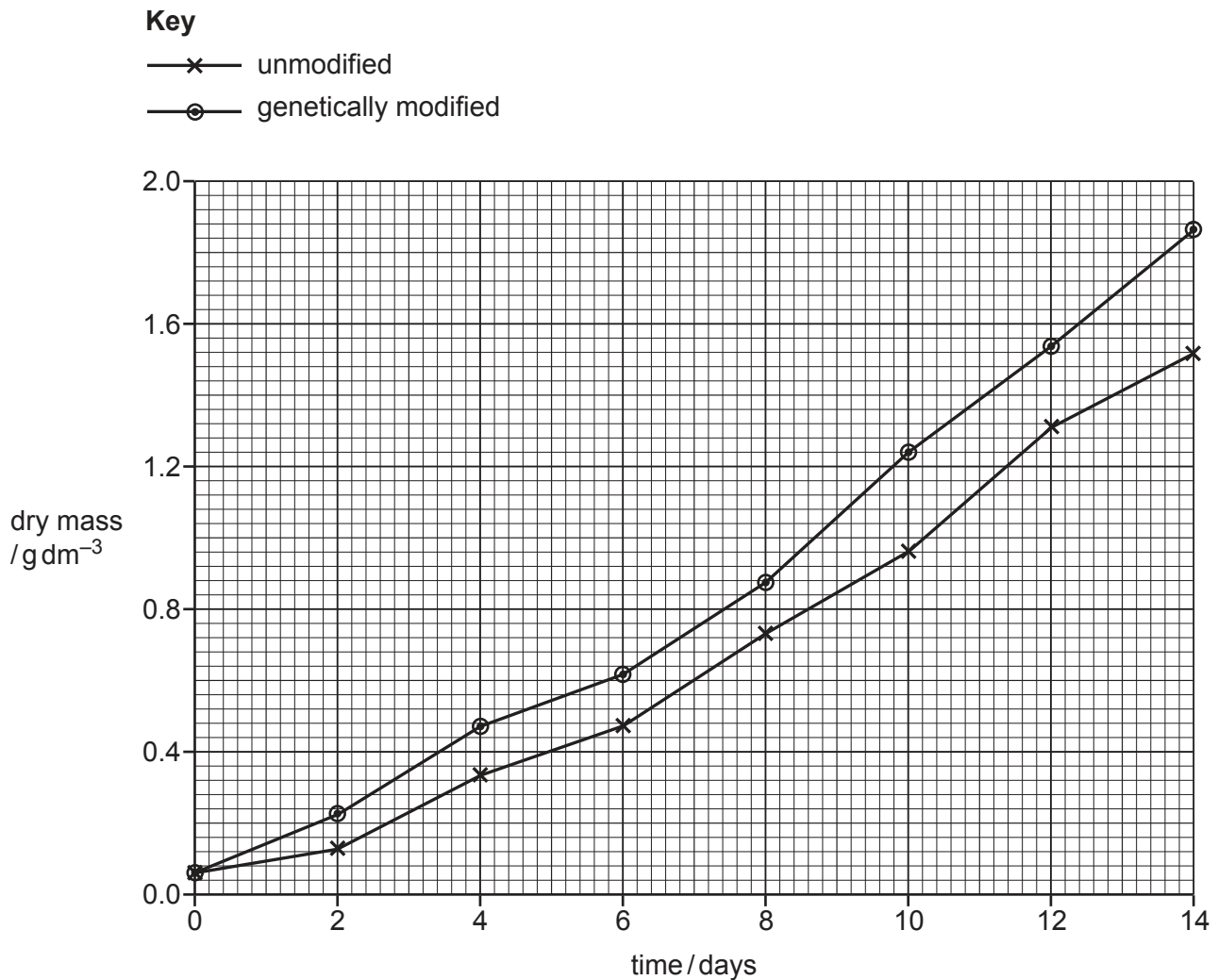


Fig. 2.1

(b) With reference to Fig. 2.1, describe the differences between the results for the two cultures.

.....  
.....  
.....  
.....  
.....  
.....  
..... [3]

(c) Explain how the Calvin cycle was affected by the genetic modification of *C. vulgaris*.

.....  
.....  
.....  
.....  
.....  
..... [3]

(d) Intermediate products of the Calvin cycle are needed to produce organic molecules for use by the cell.

Describe how these organic molecules are used by cells.

.....  
.....  
.....  
.....  
.....  
..... [3]

(e) Planting large numbers of trees is one way to reduce global atmospheric CO<sub>2</sub> concentration. Large scale culture of genetically modified *C. vulgaris* could also reduce global atmospheric CO<sub>2</sub> concentration.

Suggest **one** advantage of using genetically modified *C. vulgaris* instead of trees to reduce global atmospheric CO<sub>2</sub> concentration.

.....  
..... [1]

[Total: 11]

**[Turn over**

3 During the germination of barley seeds, amylase is produced.

(a) Describe the sequence of events that lead to the production of amylase during germination of barley seeds.

.....

.....

.....

.....

.....

.....

.....

.....

.....

..... [3]





- (c) In the malting process, germination is stopped before the concentration of sugars in the germinating barley seeds exceeds a concentration that causes shoot or root growth.

Drying the germinating barley seeds at 50 °C is one method used to stop malting.

- (i) Explain how this method would stop malting.

.....  
.....  
.....  
.....  
.....  
.....  
..... [3]

- (ii) Suggest why malting is stopped before shoot or root growth occurs.

.....  
.....  
..... [1]

[Total: 12]



(b) Fig. 4.1 summarises results for three diseases in the WTCCC study. The 22 human autosomes and the X chromosome (chromosome 23) are shown.

Chromosome locations with SNPs that are associated with a disease at a statistically significant level (greater than 5 arbitrary units) are shown in black.

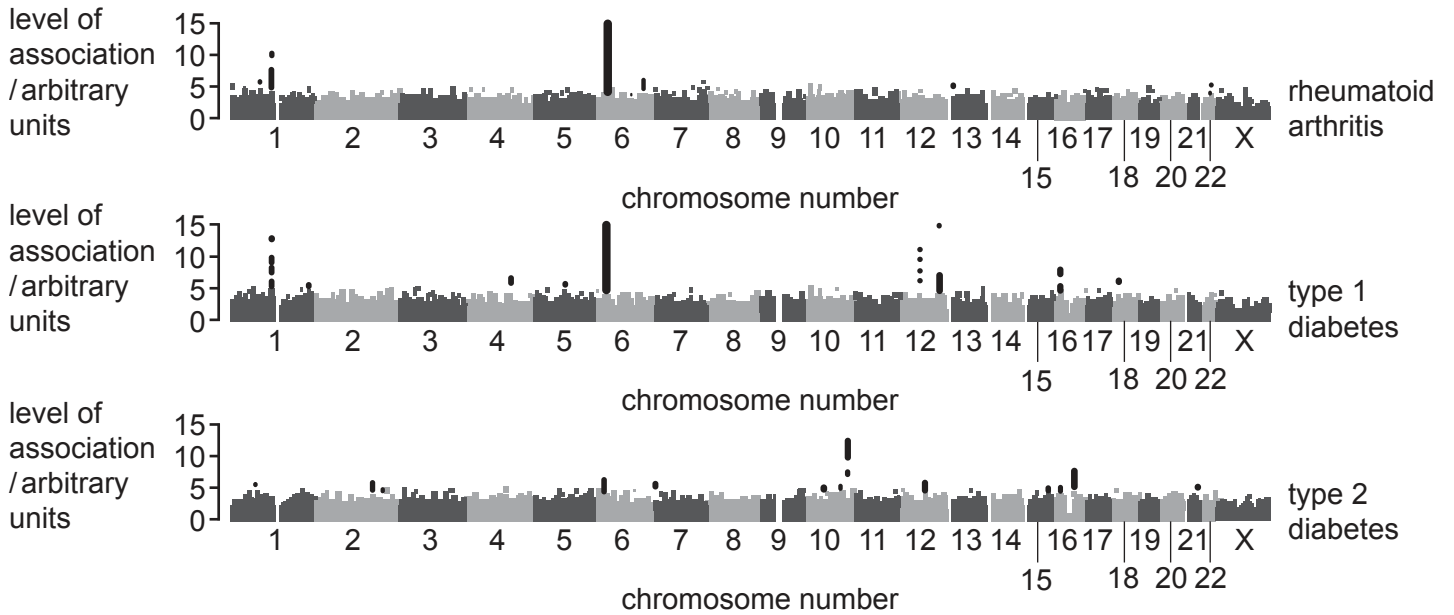


Fig. 4.1

(i) Identify the chromosomes that contain SNPs that have a high level of association with **both** rheumatoid arthritis and Type 1 diabetes.

..... [1]

(ii) With reference to Fig. 4.1, compare the genetic basis of the three diseases.

.....  
 .....  
 .....  
 .....  
 .....  
 .....  
 ..... [2]

- (c) Individuals can choose to have their DNA analysed on a microarray chip to predict their risk of developing different diseases.

Outline the social **and** ethical considerations of this type of DNA analysis.

.....

.....

.....

.....

.....

.....

.....

..... [3]

[Total: 12]

5 Biodiversity can be considered at three different levels.

Fig. 5.1, Fig. 5.2 and Fig. 5.3 are images that show these three different levels of biodiversity.



**Fig. 5.1**



**Fig. 5.2**



**Fig. 5.3**

(a) Describe the level of biodiversity most clearly visible in each image.

Fig. 5.1 .....

Fig. 5.2 .....

Fig. 5.3 .....

[3]

(b) Prairie strips are restored habitat areas planted with native grasses and wildflowers. Prairie strips are usually located between or around the edges of fields of maize or soy bean.

Students in North America wanted to investigate biodiversity along a prairie strip.

(i) Outline how the students could measure the biodiversity of plants and insects along a prairie strip.

plants .....

.....

.....

.....

insects .....

.....

.....

.....

[4]

(ii) Mathematical methods and statistical tests help to summarise and compare biodiversity data.

Name the mathematical method **or** statistical test that the students can use:

to estimate the total biodiversity of a prairie strip

.....

to test whether plant biodiversity is associated with insect biodiversity.

.....

[2]

(c) Prairie strips have environmental and economic effects.

Scientists have made long-term measurements of the environmental effects of prairie strips.

The scientists found that when prairie strips formed 10% of a crop-field:

- soil erosion decreased by 95%
- mineral loss from the field decreased by 90% for phosphorus compounds
- mineral loss from the field decreased by 85% for nitrogen compounds.

Crop plants need phosphorus (P) and nitrogen (N) to grow.

Evaluate the **economic** effects of prairie strips on farming.

.....

.....

.....

.....

.....

.....

.....

.....

.....

..... [3]

[Total: 12]



**Question 6 starts on page 18.**



(i) Complete Table 6.1 using the letters **A** to **E** from Fig. 6.1.

Each letter may be used once, more than once, or not at all.

**Table 6.1**

statement	letter
the site of the Krebs Cycle	.....
a phospholipid bilayer impermeable to H <sup>+</sup> ions	.....
the site of translation	.....

[2]

(ii) Assume that the mitochondrion in Fig. 6.1 is a cylinder.

Calculate the surface area of this mitochondrion.

Use the formula: Surface area of cylinder =  $2\pi r^2 + 2\pi rh$

Show your working.

surface area = .....  $\mu\text{m}^2$  [2]

(iii) The inner membrane of the mitochondrion has a much larger surface area than the outer membrane because of the presence of cristae.

Different cell types vary in the number of cristae present per mitochondrion. Cardiac muscle cells have mitochondria with a very large number of cristae.

Suggest **and** explain why cardiac muscle cells have mitochondria with very large numbers of cristae.

.....

.....

.....

.....

.....

..... [2]

[Total: 12]

7 (a) The Labrador is a variety of domestic dog. Labradors have fur that can be brown, black or yellow.

In Labradors, *TYRP1* is one gene that codes for fur colour. This gene has two alleles, **B** and **b**.

- The dominant allele, **B**, codes for the enzyme tyrosinase that functions in the pathway to produce melanin, leading to black fur.
- The production of melanin in Labradors is very similar to the production of melanin in humans.
- The recessive allele, **b**, codes for an enzyme that results in the production of a brown form of melanin, leading to brown fur.

Outline how melanin may be produced in Labradors to produce black fur.

.....

.....

.....

.....

..... [2]

(b) Another gene, *MC1R*, interacts with *TYRP1*.

*MC1R* has two alleles, **E** and **e**.

- The dominant allele, **E**, allows the alleles of *TYRP1* to be expressed.
- The recessive allele, **e**, prevents the alleles of *TYRP1* from being expressed.
- When no form of melanin is produced the Labrador will have yellow fur.

(i) Construct a genetic diagram to show the ratio of possible offspring from a cross between a black male Labrador, heterozygous for both genes, and a yellow female Labrador, heterozygous for *TYRP1*.

parental phenotype	black	×	yellow
parental genotype			
gametes			
offspring genotypes			
offspring phenotypes			
ratio .....			[6]

(ii) State the term used to describe a protein that is involved in the control of gene expression in eukaryotes.

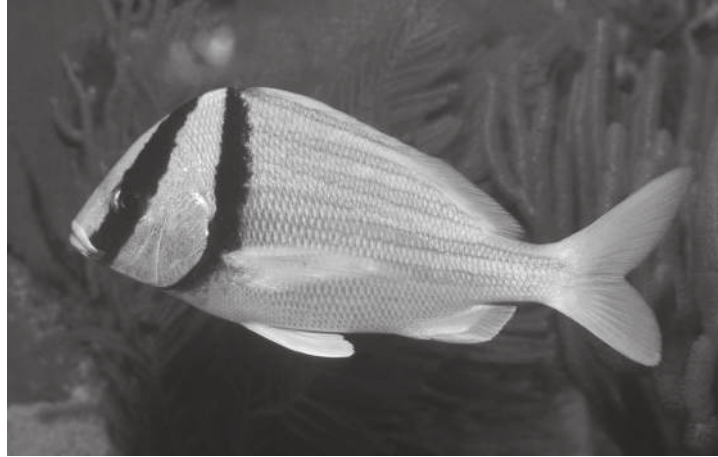
..... [1]

[Total: 9]

- 8 Twenty million years ago, an ocean covered the area where the country of Panama is now located. There was a gap between the continents of North America and South America through which the waters of the Atlantic and Pacific Oceans flowed freely.

The porkfish, *Anisotremus sp*, lived in this area between North America and South America.

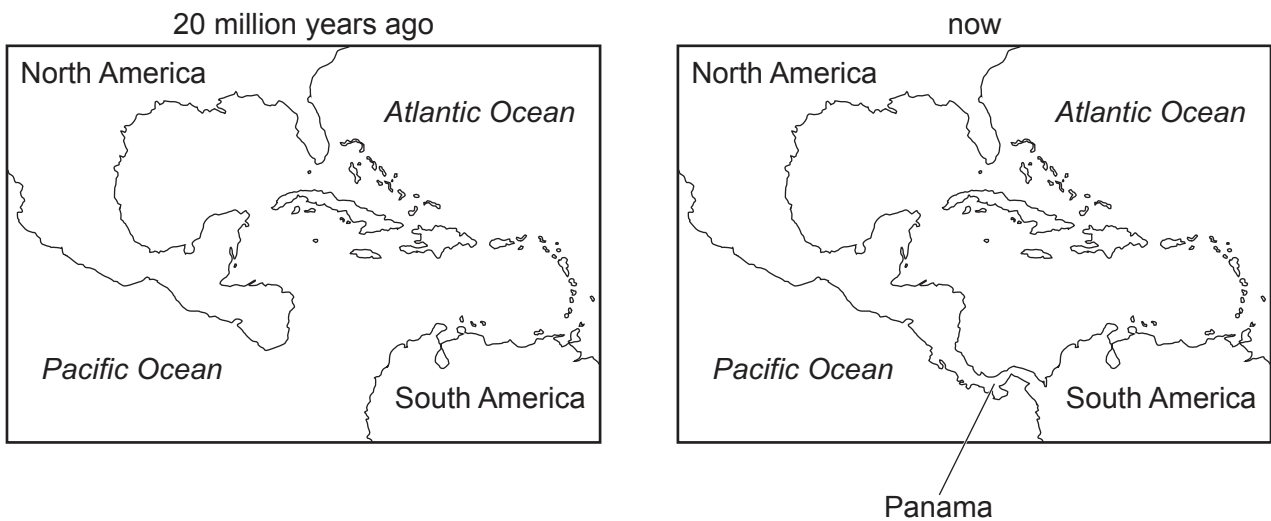
Fig. 8.1 shows a porkfish.



**Fig. 8.1**

About 3 million years ago, volcanic activity and sedimentation formed a narrow strip of land, Panama, joining North America and South America.

Fig. 8.2 shows the area 20 million years ago and now.



**Fig. 8.2**













**BLANK PAGE**

---

Permission to reproduce items where third-party owned material protected by copyright is included has been sought and cleared where possible. Every reasonable effort has been made by the publisher (UCLES) to trace copyright holders, but if any items requiring clearance have unwittingly been included, the publisher will be pleased to make amends at the earliest possible opportunity.

To avoid the issue of disclosure of answer-related information to candidates, all copyright acknowledgements are reproduced online in the Cambridge Assessment International Education Copyright Acknowledgements Booklet. This is produced for each series of examinations and is freely available to download at [www.cambridgeinternational.org](http://www.cambridgeinternational.org) after the live examination series.

Cambridge Assessment International Education is part of the Cambridge Assessment Group. Cambridge Assessment is the brand name of the University of Cambridge Local Examinations Syndicate (UCLES), which itself is a department of the University of Cambridge.